

EMERGING ARCHITECTS STUDIO

We Think Human



EMERGING
ARCHITECTS
STUDIO

EMERGING ARCHITECTS STUDIO (EASt) is an award-winning, multi-disciplinary, collaborative firm of design professionals headed by young Filipino architects. Our philosophy is to design with all stakeholders in mind. What sets us apart is our desire to satisfy our clients' needs and giving importance to *the Human Sense in our works*.

PHONE

+632 978 2077

MOBILE

+632 978 2077

E-MAIL

architects@eastudio.ph

www.eastudio.ph

f t i e eastudioph

AWARDS



National Finalist
Metrobank Arts and Design Excellence



1st Runner-Up
5th Annual Visionary Design



Special Citation
4th Annual Visionary Design



National Finalist
Design Against the Elements



1st Runner-Up
Pinakamagandang Bahay sa Balat ng Lupa

OUR SERVICES

We Think Human.

Our work puts people at the forefront, making sure that our design has a human-centric heart.



DESIGN

Pre-design / Architectural Design / Architectural Interiors / Environmental Planning / Master Planning



CONSTRUCTION

Construction Management



BERDE

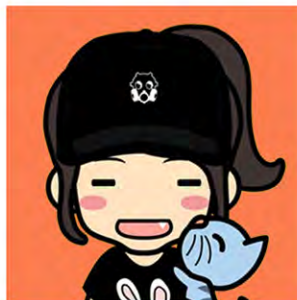
Green Building Consultancy / BERDE Coordination



3D MODELLING

Visual Illustration / 3D Modelling and Rendering / 3D Animation

THE TEAM



Our Projects

OUR CLIENTS

People we've worked with.

Our years in the industry gave us the opportunity to work with the following groups.



CLARET SCHOOL OF QUEZON CITY
Multi-Level Sports Center and Gymnasium



WORLD WILDLIFE FUND (WWF)
Tubbataha Reef Ranger Station



ROBINSONS LAND CORP.
Condominium Show Units



LAGUNA LAKE DEVELOPMENT AUTHORITY
Green Building Consultancy



DUSIT THANI
Dusit Waves, La Union



ESTÉE LAUDER COMPANIES
Estee Lauder Corporate Headquarters



PILIPINAS SHELL PETROLEUM CORPORATION
*Shell Tabangao: Masterplan,
2-Storey Depot Office Control Building
2-Storey Depot Office Terminal Building*



GLOBE
Project Galactus: Ballesteros and Tacloban



WESTERLAND PROPERTY DEVELOPMENT INC.
9-Storey Condominium, Mandurriao Iloilo



CENTRUMLAND DEVELOPMENT CORP.
Plam Glades Residence Subdivision Development, Roxas City, Capiz

PUERTO AZUL
Masterplan | Clubhouse | 4-Storey Hotel

POLARIS
Commercial Strip Mall, Malabon



GOT HEART
Art Gallery, Katipunan, Quezon City



LOVE LOCAL

Mandurriao, Iloilo City

Our Client/Developer for Love Local wanted to build a 9-Storey Residential Condominium Building that has a unique feel to it.

Being relatively new in the real-estate industry, they wanted a different approach on how to develop their 5-hectare township property in Mandurriao, Iloilo City.

As one of the first buildings to be constructed in the development, our team saw the opportunity to re-introduce Critical Regionalism - designing using forms, layouts, and materials that reflect the region's character.

A combination of stone elements and integrated landscape design gives a local and familiar vibe to the building while angled balconies for the condominium units provide residents different vistas depending on their unit's location.

LOVE LOCAL

Mandurriao, Iloilo City



THE LOCAL LIFESTYLE



ESTEE LAUDER COMPANIES

8 Rockwell, Makati





ESTEE LAUDER COMPANIES

8Rockwell, Makati

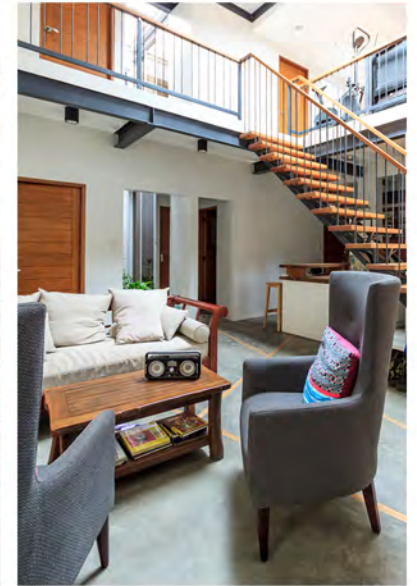


Located in a 1,000-sqm space in 8Rockwell Makati, this project serves as the corporate office of the Philippines' leading brand for cosmetics and beauty products.



WOOD BE NEW AGAIN

Antipolo City



WBNA VIEWS

For WBNA, the team analyzed the essence of the family then provided different design interventions by using in-situ salvaged wood, re-using existing elements of the house, and, finally, integrating them in the new design.

WOOD BE NEW AGAIN

Antipolo City



WBNA DETAILS

For WBNA, the team analyzed the essence of the family then provided different design interventions by using in-situ salvaged wood, re-using existing elements of the house, and, finally, integrating them in the new design.

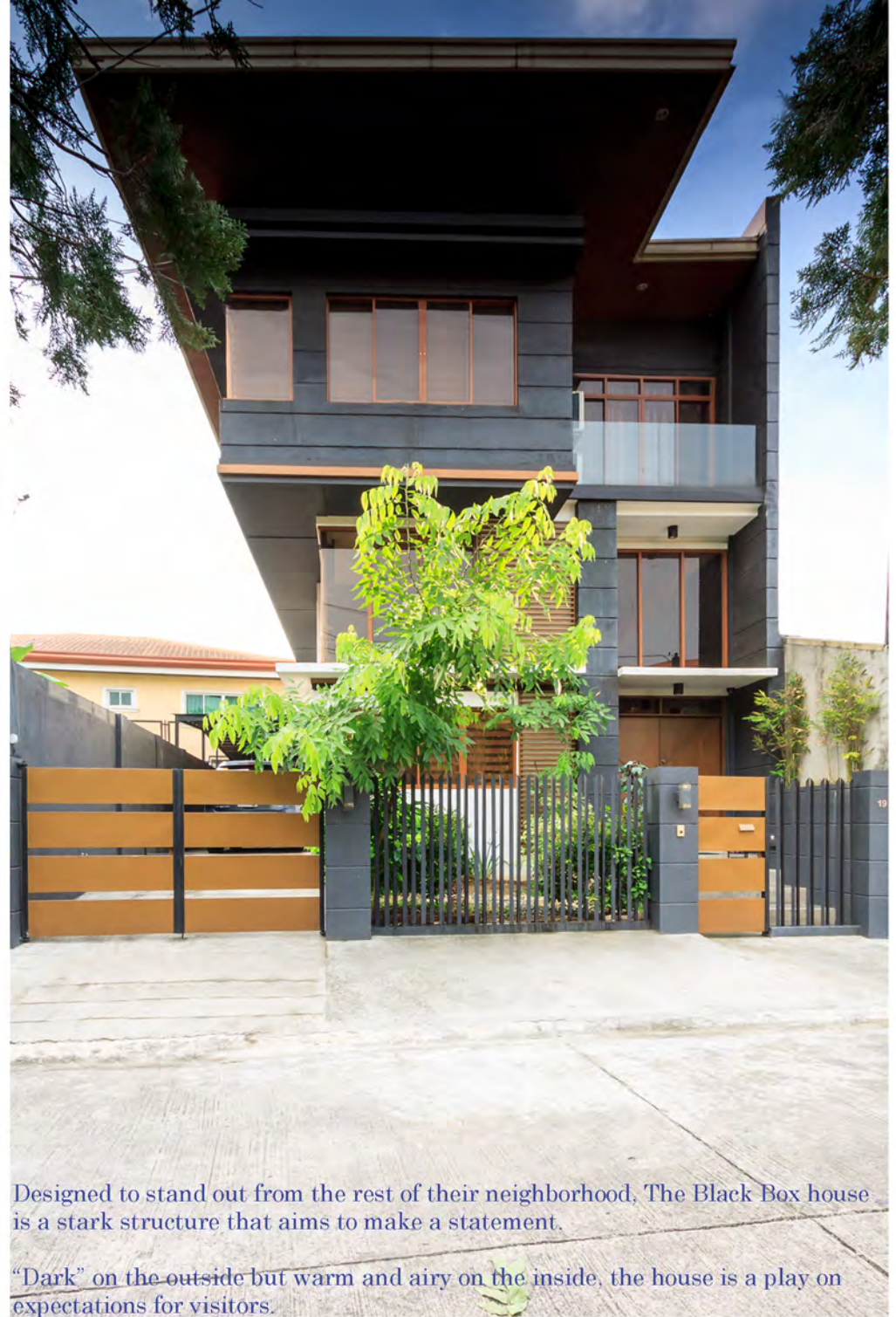




THE BLACK BOX

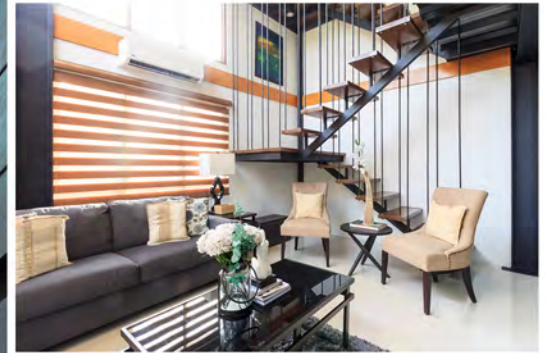
Antipolo City

EMERGING ARCHITECTS STUDIO *Design Portfolio*



Designed to stand out from the rest of their neighborhood, The Black Box house is a stark structure that aims to make a statement.

“Dark” on the outside but warm and airy on the inside, the house is a play on expectations for visitors.



INSIDE THE BLACK BOX

Antipolo City

Designed to stand out from the rest of their neighborhood, The Black Box house is a stark structure that aims to make a statement.

"Dark" on the outside but warm and airy on the inside, the house is a play on expectations for visitors.



REFINED GEOMETRY

One Shangri-la

Aiming for humble elegance, our team used soft colors for the interiors of our client's house. The intent was to give a soft and relaxing break from the bustle of the city.

REFINED GEOMETRY

One Shangri-la



Aiming for humble elegance, our team used soft colors for the interiors of our client's house. The intent was to give a soft and relaxing break from the bustle of the city.



ECO SCHOOL 0|1|0|0

Maribi, Tanauan, Leyte

This was our studio's design for a post-Haiyan (Yolanda) sustainable school prototype. Located in Maribi, Tanauan, Leyte, the new school showcases a 4-classroom prototype, with a structure raised on stilts combined with high-pitched high-albedo roofing.

The Eco School 0|1|0|0 has a simple, linear layout of classrooms with the exception of having an open, mini-amphitheater that splits the structure in the middle. This open area serves as an informal classroom, a receiving area during evacuations, and as a communal space that the students and locals can use to gather. The overall intent of the design is to promote community participation in the process of rebuilding.

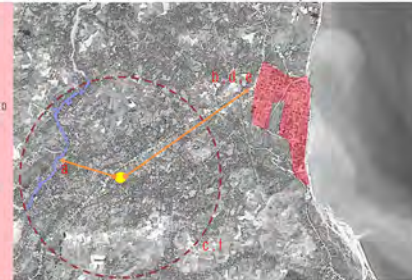
ECO SCHOOL 0|1|0|0

Maribi, Tanauan, Leyte

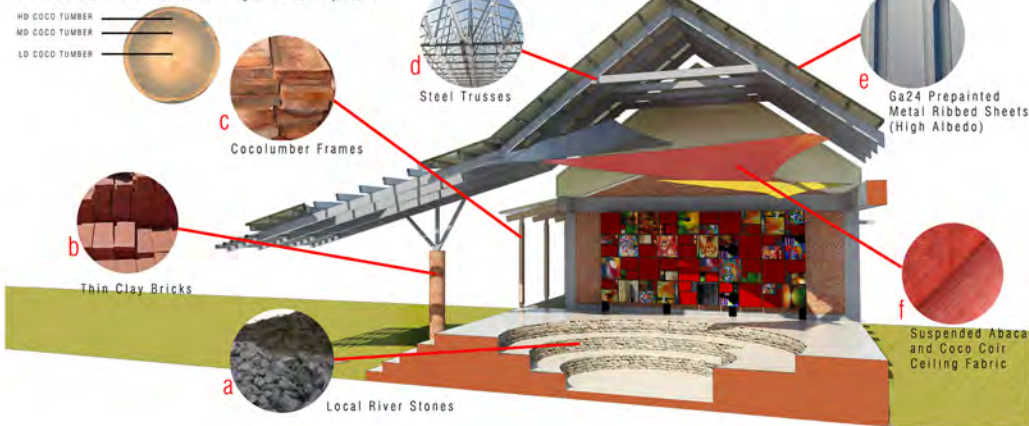
After the devastation of Haiyan in Leyte, most of the prices of construction materials increased significantly. Moreover, since there are vital infrastructures such as roads, ports, and airports are also damaged, the logistical component of transporting materials became challenging. With this in utmost consideration, the use of local and regional materials became a practical solution aside from its ecological, cultural, and economic significance.

MATERIAL	LOCATION OF PROCUREMENT/PRODUCTION
LOCAL RIVER STONES	NEARBY RIVERS AND TRIBUTARIES
THIN CLAY BRICKS	CLAY MINES IN THE FOOTHILL OF AMBAO HILL OF SITIO KALINGINAN. CAN BE PRODUCED BY LOCAL POTMAKERS IN IMPERIO ST. BROU CANAMUS. THIS CAN PROVIDE INCOME AND REVIVE THE DWINDLING COTTAGE INDUSTRY OF CLAY BRICKS AND CLAY POTS MAKING IN TANAUAN.
COCO LUMBER	WITHIN 1KM RADIUS OF THE SITE. HIGH DENSITY SECTIONS (>0.6 G/CUM) FOR STRUCTURAL FRAMES. MEDIUM DENSITY SECTIONS (0.4-0.59 G/CUM) FOR TABLES, SEATS AND OTHER FURNITURES. LOW-DENSITY SECTION (<0.40 G/CUM) FOR PANELS OF THE ART WALL.
STEEL FRAMES	TAKEN FROM TANAUAN PROPER.
ROOFING SHEETS	TAKEN FROM TANAUAN PROPER.
ABACA AND COCO COIR	WITHIN 1KM RADIUS. PROCESSED BY LOCALS

material procurement location map

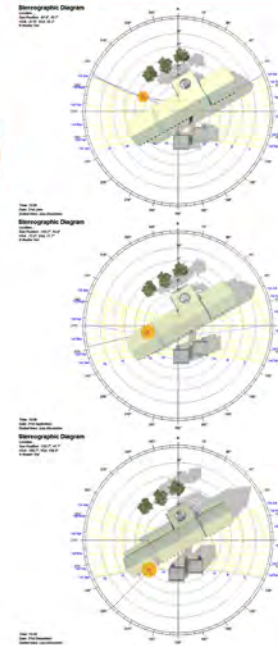


cross-section of cocolumber showing three density zones



solar orientation analysis

The narrow floor plate minimizes direct sun penetration. The result of this analysis shall be used in determining the optimal location of solar panels to be installed in the future.



rainwater harvesting

ANNUAL RAINFALL - 2215.60 MM.
DESIGN PRECIPITATION - 1477.07 MM
ROOF CATCHMENT AREA - 252.00 SQM
LOSS FACTOR - 0.80
LONGEST DAYS W/O RAIN - 30 DAYS

ANNUAL RAINWATER HARVESTING POTENTIAL

78664.25 GAL

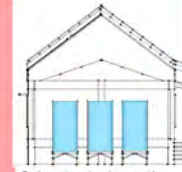
ANNUAL CALCULATED FLUSH AND FLOW WATER USE VOLUME

72349.20 GAL

EXCESS RAINWATER VOLUME FOR OTHER USES

6315.05 GAL

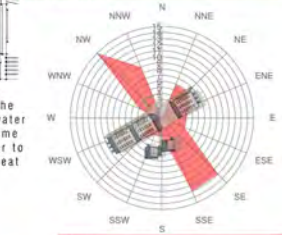
RAINWATER SHALL BE USED FOR WASHING AND IRRIGATION PURPOSES AND THE DATA SHOWS THAT IT CAN SUPPORT WATER NEEDS UP TO 30-DAY PERIOD OF NO RAIN.



Rainwater tanks on the east and west side of the building collect the water for future use. At the same time, it acts as a buffer to prevent direct sun to heat up the wall.

rose wind diagram

The building is oriented to capture the prevailing winds and the narrow floor plate (7m) ensures cross-ventilation. During stormy conditions, the storm shutters are closed, and the violent winds permeates through the unenclosed area in the middle.



Roof Cover
Made of high albedo prepainted metal sheets. The profile removes the need for eaves which are susceptible to wind uplift. The roof slope is at 28degrees to prevent wind suction.

Roof Structure
Made of steel in a truss frame. All connections are anchored in raft beams.

Roof Structure
Rafters are spaced to have high clearance. All rafters are reinforced and fireproofed.

Roof Structure
Lower windows with glass louvers to facilitate 100% ventilation when fully opened while allowing daylight to permeate. Light shutters are integrated on the south side to prevent direct light penetration. All windows have storm shutters that can be closed in the event of typhoons, surges, or tsunamis.

Furniture
Made from salvaged or locally source once timbers.

Core Elements
Traditional reinforced concrete post and beam construction. Located in the middle, walls made of concrete interlocking blocks. Fabricated from salvaged or locally source timber. Stairs clad with thin clay bricks.

Roof Structure
Fabricated from salvaged or locally source timber. Stairs clad with thin clay bricks.

This was our studio's design for a post-Haiyan (Yolanda) sustainable school prototype. Located in Maribi, Tanauan, Leyte, the new school showcases a 4-classroom prototype, with a structure raised on stilts combined with high-pitched high-albedo roofing.

The Eco School 0|1|0|0 has a simple, linear layout of classrooms with the exception of having an open, mini-amphitheater that splits the structure in the middle. This open area serves as an informal classroom, a receiving area during evacuations, and as a communal space that the students and locals can use to gather. The overall intent of the design is to promote community participation in the process of rebuilding.

HUB

Claret School, Quezon City

Our design for the New Claret School Gymnasium is a structure that embodies the essence of the Claret's community experience.

Through this design, our team aimed to showcase the identity of Claret, which is a forward-looking, innovative, and sustainable institution that serves as a role model for others to aspire to.





ACTIVITIES IN THE HUB

*Claret School
Quezon City*



Our design for the New Claret School Gymnasium is a structure that embodies the essence of the Claret's community experience.

Through this design, our team aimed to showcase the identity of Claret, which is a forward-looking, innovative, and sustainable institution that serves as a role model for others to aspire to.

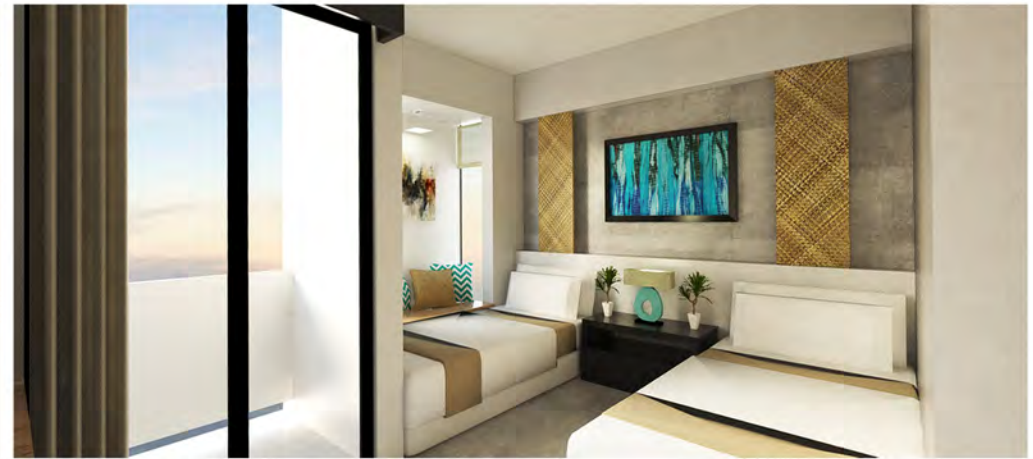
TUBONG PALAWAN

El Nido, Palawan

Our design for a mid-rise hotel in El Nido was a product of our vision to create a building that is distinct and organic, and is unreservedly relatable to the context of the locality.

The intent was to create a building that looks different because it performs differently. The exterior incorporates the rough texture of El Nido's unique geological formations (rocks, limestone cliffs, etc.); while the interior incorporates local materials and finishes.





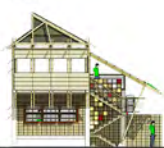
EXPERIENCING TUBONG PALAWAN

El Nido, Palawan



PINAKAMAGANDANG ELEVATION

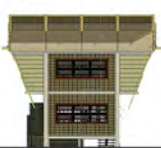
LEFT



FRONT



REAR



RIGHT



PINAKAMAGANDANG SECTION

LONGITUDINAL



CROSS



CROSS



CROSS



MAALIWALAS

SENSE OF WARMTH
BATHE THE INTERIOR OF THE HOUSE WITH DIFFUSED AND REFLECTED LIGHT BY SUN SCOOP. BLOCK DIRECT SUNLIGHT THROUGH SUN SHADING DEVICES.

SULIT

MINIMAL WASTAGE
EFFICIENT USE OF COMMERCIALLY AVAILABLE CONSTRUCTION MATERIALS SINCE THEY READILY FIT INTO THE MODULE. STRATEGIC LOCATION OF UTILITIES WITH SIMILAR FUNCTIONS AND USE OF ENERGY EFFICIENT SYSTEMS.

ANGKOP

CONTEXT SENSITIVITY
MINIMAL SITE DISRUPTION AND BUILDING FOOTPRINT

MODYULAR

BOX IN A BOX FLEXIBILITY
USERS CAN PARTICIPATE IN CONSTRUCTION QUICK AND EASY ASSEMBLY

BUKLOD

CONNECTION OF INTERESTS
ADAPTABLE SPACES BASED ON THE DEMAND OF THE USERS.

PAYAK

PURITY IN FORM
AESTHETICS BASED ON BUILDING CONSTRUCTION AND MATERIALS.

MATATAG

DURABLE AND DISASTER RESILIENT
INTERGRATION OF PROPER MATERIALS AND CONSTRUCTION SYSTEM THAT CAN WITHSTAND HARSH WEATHER AND THE TEST OF TIME

PRESKO

BREATHING STRUCTURE
PROVISION OF OPENINGS TO ALLOW UNIMPEDED AIR FLOW THROUGH THE HOUSE AND TO ALLOW HOT AIR TO ESCAPE.



OPM HOUSE

Taytay, Rizal

Our client had 3 distinct design requirements:

They wanted the house to have an industrial feel combined with traditional Filipino elements.

They wanted to maximize their view of Laguna Lake and the skyline of Metro Manila.

They requested for a music room.

Our approach was to place the structure on one side of the lot and orient the house toward the vista. In the process, we were able to create an outdoor garden and amphitheater which connects to the bedrooms and the music room; creating a seamless transition between indoor and outdoor spaces.



The design brief for the Brick-Up House was simple: our client wanted to maximize natural ventilation while minimizing heat gain and direct exposure from the sun. They also wanted a split level floor plan. Lastly, the father loves collecting Lego while the mother loves collecting clay jars.

Our team decided to locate most of the bedrooms along the North side of the house where we provided generous amounts of windows to allow air in the house. Extended roof overhangs and landscape elements along the property line were utilized to minimize heat gain and add privacy.

We then integrated a double-wall brick façade along the main entrance of the house to create an air gap for the main wall of their house. Our team felt that the material perfectly captured both the characters of our client's collections and their architectural requirements.

BRICK UP HOUSE *Quezon City*

EMERGING ARCHITECTS STUDIO *Design Portfolio*



TIER T[H]REE

Antipolo City

Tier T[h]ree is a house above an office... above a garage. Our client wanted to do his business at the comfort of his home. With this in mind, we designed the house to have transitional spaces that move from public to semi-private then to private spaces.

The highlight of the house is its exposed roof structure defined by its long roof eaves that go together with a red Y-profile steel support in tension.



The challenge posed by our client for the Closed Open House Pt. I; was to design a duplex house for his sons who have their own distinctions.

Given our client's situation, our team tackled one house first. We introduced a solid structure that envelops the spaces of the house and creates a sense of isolation as seen from outside. However, upon entering the premises, an inner courtyard greets guests while different openings in the building envelope allow daylight and natural air into the residence.

The combination of these openings and landscape elements provides connection to the outside world and create a relaxed atmosphere inside the house. The layout and the design for the first phase of the Closed Open House also signifies our hope that Part II will be open to complement and "talk" with the first house.

CLOSED OPEN HOUSE PT. 1

Las Pinas City



OUTLINED HOUSE

Maddela, Quirino

On designing the Outlined House, our team used the sketch of our client's son as an inspiration.

The design is defined by simple geometry which mimics the mountain range that's visible from the site.

Generous amounts of windows and openings allow for maximum daylight and ventilation, in line with the family's request to have abundant views of the surrounding nature.

The result is a design that opens up to multiple views from the different areas of their house.



STAIRWAY TO HEAVEN

Taytay, Rizal

The design for Stairway to Heaven took advantage of a 13 meter difference in elevation in the property to introduce different decks and spaces. These areas create transitions from public to private activities. The existing landscape and vegetation were also integrated in the design to create an experiential walk for the family everytime they come home. Lastly, the house looks out into the horizon, with the family enjoying a view of the Metro Manila skyline.

THE NEW TUBBATAHA STATION

Sulu Sea

In partnership with the World Wildlife Fund (WWF) and the Tubbataha Reefs Natural Park Management, this facility in the middle of Sulu Sea is our team's proposal in providing a structure that can house our rangers, scientists, and nature enthusiasts.

At the same time, this facility will be better equipped in studying, protecting, and maintaining the Philippines' natural marine resources.



Tubbataha National Marine Park

Protecting the Source of Life with the New Tubbataha Ranger Station

PROTECTING THE PHILIPPINE REEFS

Tubbataha Reefs Natural Park is one of the most important marine protected areas in the Philippines. It is a UNESCO World Heritage Site and a Ramsar Wetland of International Importance. The park is home to a rich and diverse marine ecosystem, including coral reefs, mangroves, and seagrass beds. It is also a critical habitat for many species of marine life, including the Philippine eagle, the Philippine shark, and the Philippine eaglefish.



CONSERVATION DESIGN SUSTAINABILITY

Protectors of the Reef The New Tubbataha Ranger Station

Designed by a team of architects from EAST Studio led by Melgazo, the new ranger station will have a main structure in the middle, a research structure, and a transport structure.

The main structure includes the ranger's quarters, command center, visitor center, a mini-museum and library, and a detention center. There will also be a hydroponics garden in the main structure, where the rangers can plant vegetables.

The research building will house researcher's quarters, laboratories, and work areas. Meanwhile, the transport structure includes fuel storage, auxiliary power, an observation deck. There will also be a helipad, although Tubbataha management does not have its own helicopter. According to Melgazo, it will be up to the Philippine Navy or Coastguard if a helicopter will be present at all times.

PROJECT LOCATION



Tubbataha Reefs Natural Park is a 97,030-hectare Marine Protected Area (MPA) in Palawan, the westernmost Philippine province. It is located 120km southeast of Puerto Princesa City, at the heart of the Coral Triangle, the global centre of marine biodiversity.

DETAILS TUBBATAHA STATION *Sulu Sea*

CONSERVATION DESIGN SUSTAINABILITY



DOMES

Utilizing the potential of hexagonal form to produce a domical structural system composed of glass and solar panels.

SPACE FRAME

While supporting the double layer glass dome, this framing system also acts as a thermal insulation by producing a gap of air inside.

RAIN WATER HARVESTING

Rain water is harvested for auxiliary use particularly on hydroponics system and toilet flushing.

RECYCLED MATERIALS

Materials from the salvaged USS Guardian are recycled and re-used for non-structural parts of the building.

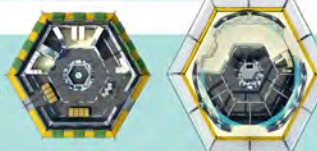
LOUVERED WINDOWS

Louver windows with tempered glass blades surrounds the structure creating uninterrupted air pathways for passive ventilation.

HYDROPONICS

Hydroponics system is used as an alternative source of food such as leafy vegetables.

Designed by a team of architects from EAST Studio led by Melgazo, the new ranger station will have a main structure in the middle, a research structure, and a transport structure.



CONSERVATION DESIGN SUSTAINABILITY

Harnessing Renewable Energy by Integrating Green Technology into the Structure



Photovoltaic Panels

Designed by a team of architects from EAST Studio led by Melgazo, the new ranger station will have a main structure in the middle, a research structure, and a transport structure.



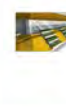
Micro Wind Turbine

Designed by a team of architects from EAST Studio led by Melgazo, the new ranger station will have a main structure in the middle, a research structure, and a transport structure.



Rain Water Collection

Designed by a team of architects from EAST Studio led by Melgazo, the new ranger station will have a main structure in the middle, a research structure, and a transport structure.



Hydroponics System

Designed by a team of architects from EAST Studio led by Melgazo, the new ranger station will have a main structure in the middle, a research structure, and a transport structure.

Partners

Arch. DYLAN MELGAZO



Why we are here
To stop the degradation of the planet's natural environment and
to build a future in which humans live in harmony with nature.



MELLOW YELLOW

Robinson's Show Unit - Escalades Tower

The young couple who owns this unit wants a residence that evokes a sense of warmth and relaxation as they both come home from a day's work. The design uses a mixture of yellow patterns, tones, and textures to achieve this feeling.



Puerto Princesa, Palawan



Located in Puerto Princesa, this low-density commercial structure incorporated an asymmetrical butterfly roof (or V-roof) with an off-center valley. It was designed as such on purpose. This type of roof allowed a higher usable space above ceiling while also creating a visual separation of function and program

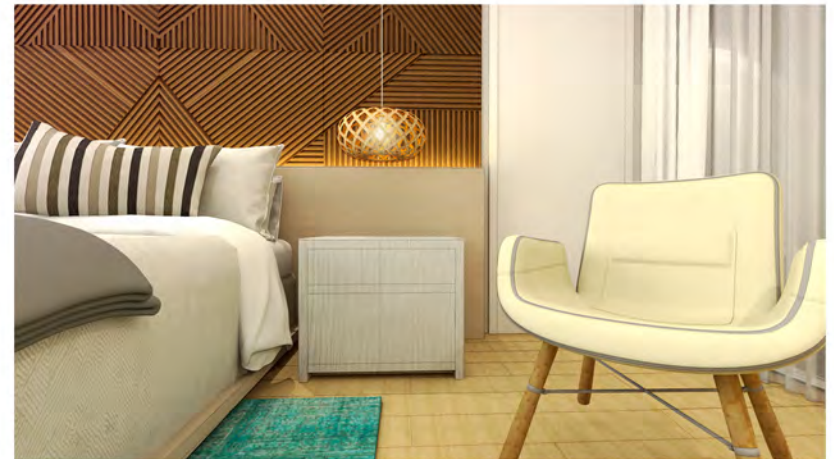
BREAK FREE

Paranaque City

Our proposal was a modified row house typology - not strictly a row house, and not also a duplex nor a single-detached. It is a little bit of each of them. We put a firewall on both sides of the house, then provided a setback of 600mm on each side. We were then able to make use of the void for utilities and introduce a space that allowed winds to circulate within the development.

It even became a green design feature for each housing unit.





DUSIT WAVES

La Union





GOT HEART

Quezon City

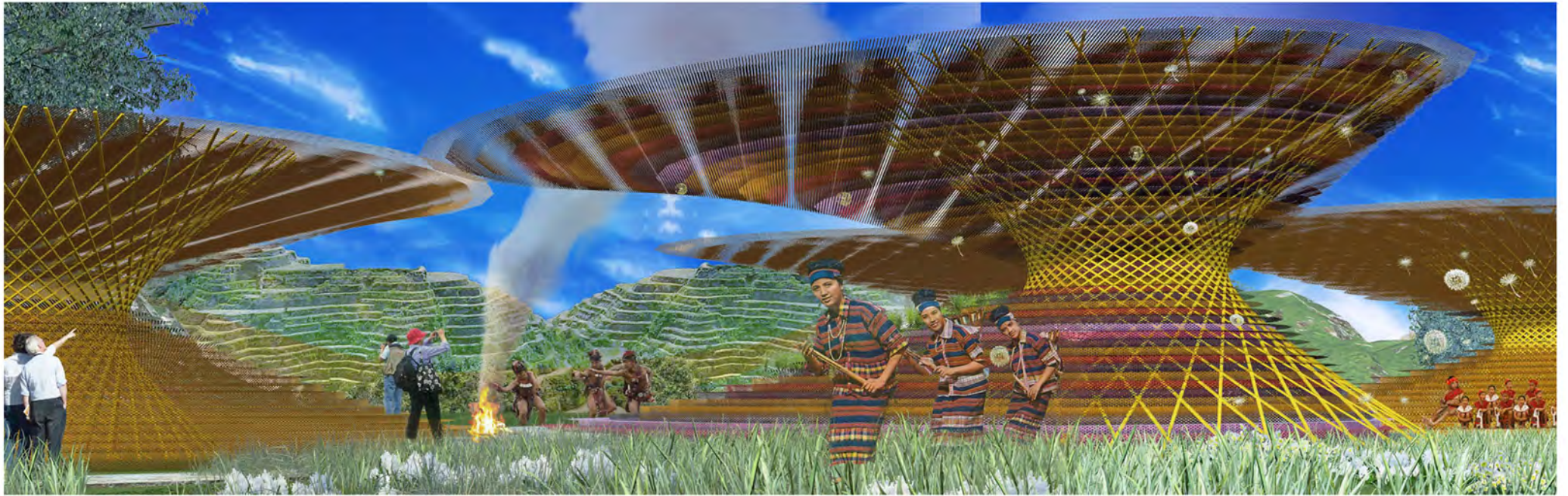


EXTREME

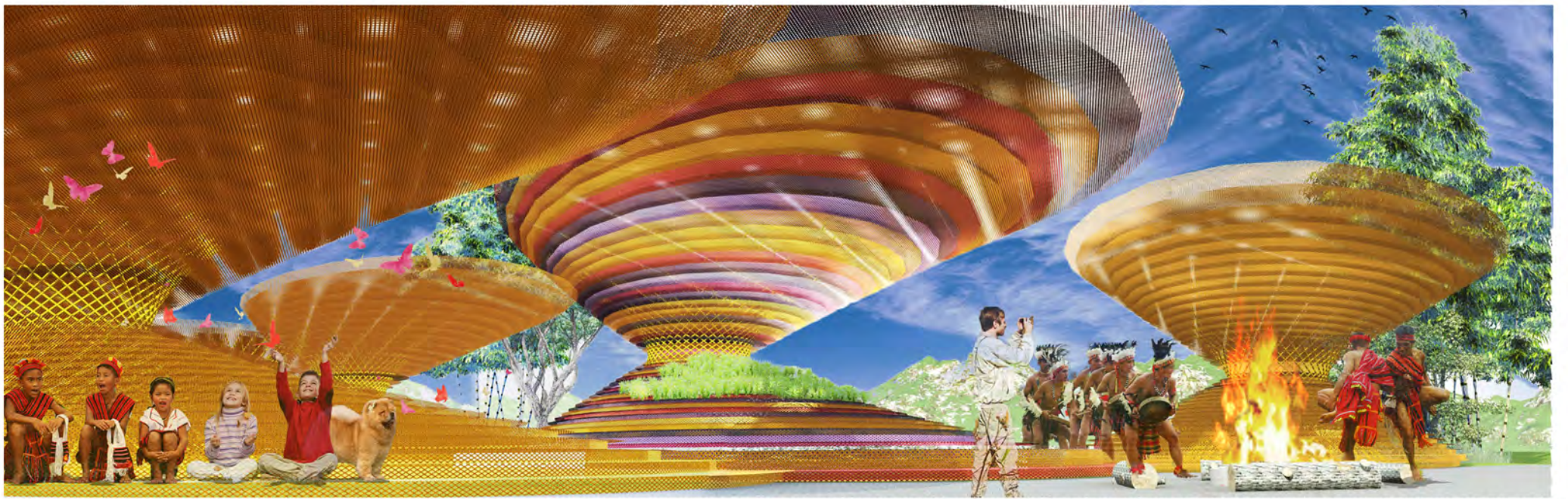
Raffles Center, Ortigas

This office in Raffles Tower will be the headquarters of Electronics Extreme (EXE),

EXtreme's mission is "Providing fun and happiness to our customers with better gaming experience". The goal of our collaboration is to encapsulate this idea in their new office.



BULWAGAN NG PAMANA *Banawe Rice Terraces*





This hotel by the cliffs of Cavite serves as the highlight of a renewed golf club.

With cascading hotel rooms that follow the slope of the terrain, the hotel gives guests unique views of the sea and the horizon.

PUERTO AZUL

Cavite

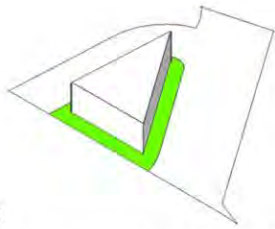




ARKO

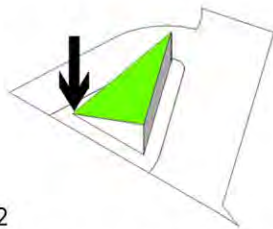
NATIONAL FINALIST, METROBANK ART & DESIGN EXCELLENCE 2014

a pragmatic cultural civic center for the arts inspired by our local gateways or arkos



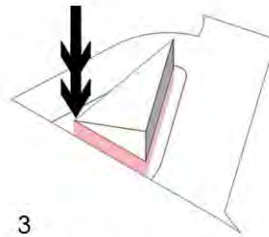
1

Prescribed setbacks, building height, and gross floor area identified on site.



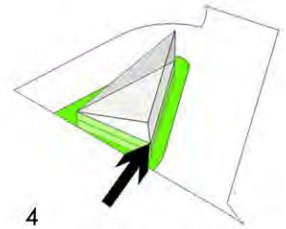
2

Corner pushed downwards extending the landscape and creating urban space above.



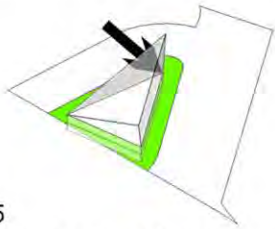
3

Floor plates are extended towards basement to offset spaces.



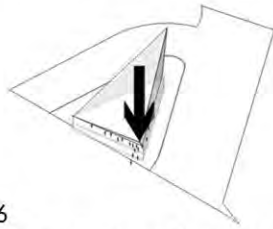
4

Corner pushed inwards extending the landscape.



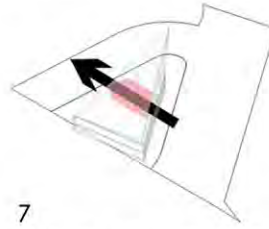
5

Corner pushed inwards extending the landscape.



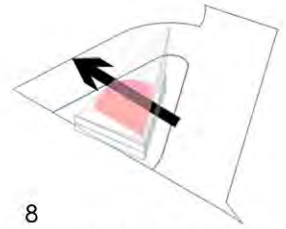
6

Corner pushed downwards according to human scale.



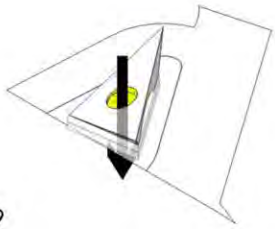
7

Volume is punctured to create an urban room. New transitional space is created.



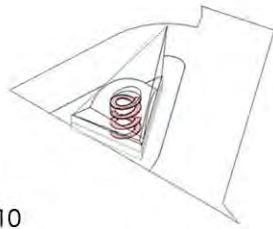
8

Urban room is sculpted to create an experiential space.



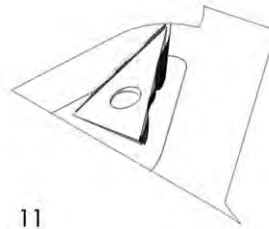
9

Volume is punctured along the vertical axis.



10

A continuous ramp is introduced creating a 'solar-air atrium' in the urban room



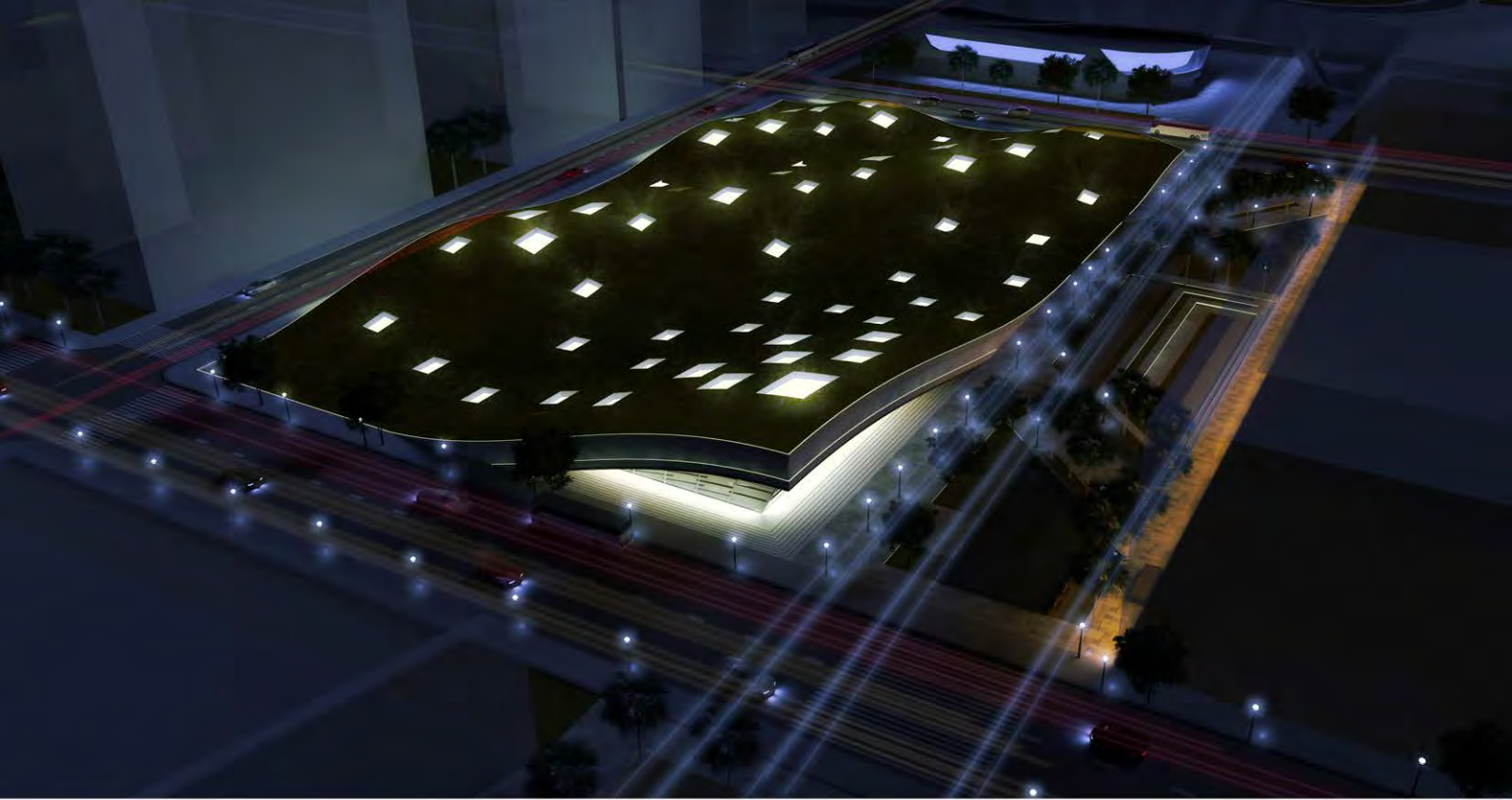
11

Weaved outer skin to soften the structure and be culturally relatable.



12

VOILA!



#BASE

1ST RUNNER-UP, BLUEPRINT AVID 2013

'unveiling' Philippine contemporary art through architecture in harmony with urban design, transportation, and technology

AN "UN-VEILING"

Philippine contemporary art is an **innate art**.

It is one that is not visually and tangibly exposed, but one that is experienced in order to be appreciated.

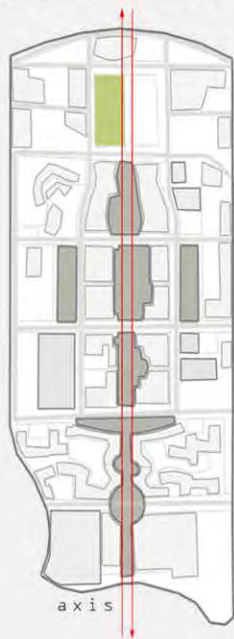
Its richness and diversity is cherished and admired on a personal level.

The design is an "unveiling" of the Philippine contemporary art - its nature, meaning and secrets.

The structure is an accessory.

The users will consummate the act.

FEASIBLE SURFACE

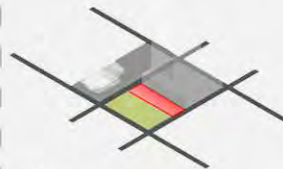


SURFACE APPROACH

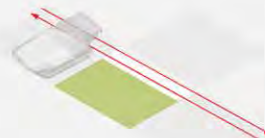


FORM TRANSLATION*

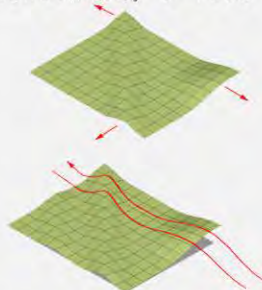
setback



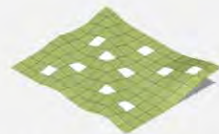
axis



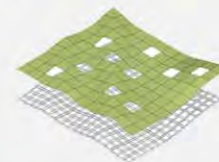
continuity & flow



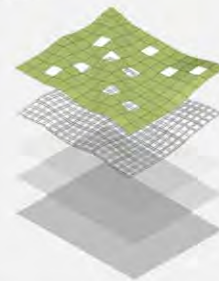
perforate



system



layer



*FORM GENESIS

Classification System
Phylogenesis: form's art

ground

multiface

bifurcated

oriented

continuous

contingent

surface

shifting





BULWAGAN NG PAMANA

UNESCO BANAUE RICE CENTER VISITOR CENTER, 2013

creating a center that preserves the living landscape and weaves together the strands of the cultural fabric while showcasing the visitor's journey to the terraces

FLOOR LEVELS



FORM EVOLUTION

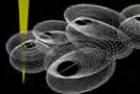
CONFINED ORGANIC
FIXED NODES
LIMITED GROWTH
BOUND ENVIRONMENT



LIBERATED ORGANIC
FIXED NODES
UNBOUND ENVIRONMENT



LIBERATED GROWTH
RANDOM NODES
UNBOUND ENVIRONMENT



PLANNING CONCEPTS

1 ORGANIC SPATIAL LAYOUT

THE SPACE PROGRAM DESIGNATED FOR THE PAVILION ADAPTS AND ADAPTS TO THE REQUIREMENTS OF THE COMMUNITY, WITH DUE RESPECT TO THEIR EXISTING CUSTOMS AND TRADITIONS, RE-EMPHASIZING AND RE-CONFIRMING THEIR VITALITY.

THE DESIGN ALLOWS ADAPTABILITY IN TERMS OF SCALE, PROGRAMMING, PLANNING AND CIRCULATION.

THE PLANNING METHODOLOGY IS DESIGNED TO SPECIFICALLY FOCUS TOWARDS SUSTAINABILITY. IT WILL BE KEPT SIMPLE AND UNIVERSAL TO BE EASILY UNDERSTOOD AND APPLIED IN ANY SOCIO-ECONOMIC AND GEOGRAPHIC SETTING.

2 CLUSTERED DEVELOPMENT

THE DESIGN ILLUSTRATES 5 NODES WHICH REPRESENT THE 5 CLUSTERS OF RICE TERRACES OF THE PHILIPPINE CONDILLERAS.

EACH NODE SYMBOLICALLY ACCENTUATES ITS RESPECTIVE SITE.

EACH NODE AIMS TO HOUSE THE MOST ESSENTIAL SPATIAL FUNCTIONS REQUIRED FOR THE SITE'S VISION CENTER.

THE FUNCTIONS OF THE CENTER SHALL MERGE WITH THE COMMUNITY'S DAILY CUSTOMS, BY PROVIDING PLACES FOR SOCIAL GATHERINGS, EDUCATIONAL EVENTS, AND COMMUNITY SERVICES.

3 A BULWAGAN

THE PROGRAM INTENDED FOR THE STRUCTURE IS A BULWAGAN, OR PAVILION.

IT IS DESIGNED TO INTENTIONALLY RECAPTURE THE EXISTING CULTURES AND TRADITIONS (FAMILIAR & UNFAMILIAR) OF THE PEOPLE AND AT THE SAME TIME, INTRODUCE AUXILIARY PROGRAMS TO SERVE THE NEEDS OF THE VISITORS, AS WELL AS THE LOCAL COMMUNITY.

FLOOR PLAN



ELEVATIONS

FRONT ELEVATION



RIGHT ELEVATION



REAR ELEVATION



LEFT ELEVATION

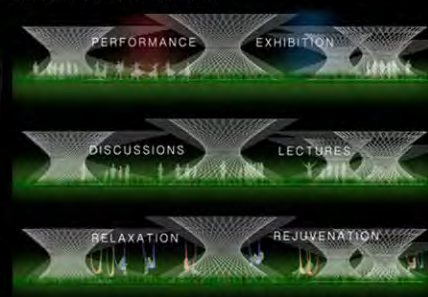


SECTIONAL STUDIES

METICULOUS STUDIES ON PROPORTION, ALIGNMENT, SPACING, AND SCALE WERE CARRIED-OUT IN ORDER TO ACHIEVE THE PROPOSED EFFECT OF THE STRUCTURE, WITH DUE CONSIDERATION OF THE ENVIRONMENTAL ELEMENTS.



THE EXISTENCE OF EACH NODE IS DEEMED NOT TO OVERWHELM AND ALIENATE THE LOCALITY AND VISITORS TO THE SITE, BUT RATHER, TO SERVE AS SUPPLEMENT TO THE EXISTING NATURAL AND BUILT ENVIRONMENT.



THE DESIGN APPROACH USED FOR THE VISION CENTER IS SPECIFICALLY CENTERED TOWARDS SUSTAINABILITY. IT IS SET OUT TO DEFINE A NEW PARADIGM, SUITED TO THE NEEDS AND REQUIREMENTS OF THE VISITORS & LOCAL COMMUNITY.

THE STRUCTURE IS AIMED TO BE A FLAGSHIP SYMBOL FOR A SELF-SUSTAINING COMMUNITY WHO HAVE ENDURED A HISTORY OF SOCIAL CHALLENGES AND DILEMMAS.

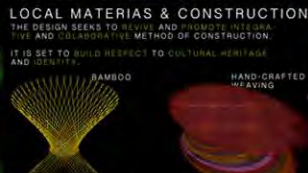
LOCAL LABORS

THE PROPOSAL ASPIRES TO RAISE LOCAL AWARENESS, ENHANCE LOCAL SKILLS, AND EDUCATE LOCAL PEOPLE ON HOW TO ACQUIRE AND UTILIZE LOCAL MATERIALS, AS WELL AS SUSTAINABLE MATERIALS AND TECHNOLOGY.

LOCAL MATERIALS & CONSTRUCTION

THE DESIGN SEEKS TO REVIVE AND PROMOTE INTEGRATIVE AND COLLABORATIVE METHOD OF CONSTRUCTION.

IT IS SET TO BUILD RESPECT TO CULTURAL HERITAGE AND IDENTITY.



THE DESIGN WILL EMPLOY LATTICE STRUCTURAL ASSEMBLY, A TYPE THAT IS VERY ACCUSTOMED TO THE LOCALITY.

IT SHALL UTILIZE ALTERNATIVE THAT WILL BEHAVE AS MUCH TO SKIN THE STRUCTURE, IT CAN VARY ON EACH LOCALITY.

BACKWARD-FORWARD INTEGRATING FINISH



SECTION

LONGITUDINAL SECTION

CONTEXTUAL RESPONSE & IMPACT

THE DESIGN ASPIRES TO ENHANCE THE SURROUNDINGS, FITTING FUNCTIONALLY AND AESTHETICALLY INTO THE COMMUNITY SETTING. IT AIMS TO WEAVE TOGETHER THE STRANDS OF CULTURE AND TRADITION THAT SHALL FILL THE GAP NATURALLY THAT IT SEEMS AS EXISTING PREVIOUSLY.

FUNCTIONAL ADAPTABILITY

THE GENERAL IDEA FOR THE WHOLE PROPOSAL IS TO BE UTILIZED AND BE FULLY FUNCTIONAL AT ANY PERIOD, AND BE ABLE TO CARRY-OUT PROGRAMS AS MAY BE DEEMED NECESSARY.

THE DESIGN WAS INTENDED TO ANTICIPATE AND CATER TO SUCH SCENARIOS.

PERFORMANCE PODIUM

PROVIDING AN OPPORTUNITY IN SHOWCASING LOCAL TALENT AND CULTURE TO TOURISTS AND ENTHUSIASTS.

LANDMARK OF LEARNING

A FULLY IMMERSIVE EDUCATIONAL TOUR THAT PROVIDES THE GENERAL PUBLIC OF THE IMPORTANCE OF THE HERITAGE SITE.

HAMMOCK HAVEN

A STRUCTURE THAT ACTS AS A REFUGE OF RELAXATION OR NATURE, LOVER AND WHICH MAY FUNCTION AS MEDITATION EDENS EVEN IN OFF-PEAK SEASONS.

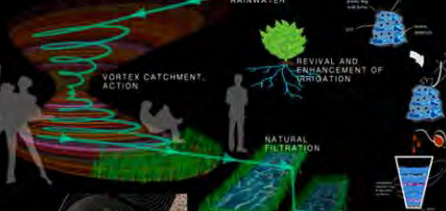
SUSTAINABLE DESIGN FEATURES

OFF-GRID ENERGY GENERATION THRU SOLAR HARVEST

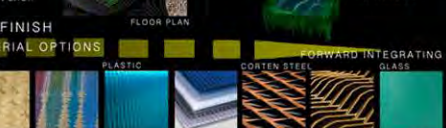
PROVISION OF SOLAR PANELS FOR ENERGY GENERATION SHALL BE APPLIED IN THE PROPOSED STRUCTURE.

RAINWATER HARVEST, TREATMENT & DISTRIBUTION

RAINWATER HARVEST, TREATMENT AND DISTRIBUTION SYSTEM WILL BE THE FLAGSHIP AND STWARD FEATURE OF THE VISION CENTER. EACH NODE IS SPECIFICALLY DESIGNED TO UTILIZE THE HARVESTED RAINWATER, SUCH AS IRRIGATION, WATER TREATMENT, WATER SUPPLY, AND TOILET FLUSHING.



BACKWARD INTEGRATING





DOS

UP COLLEGE OF LAW LIBRARY, 2014

a hybrid approach on bibliotheque design that reflects the character of the Philippine legal system by unifying two different styles and becoming perfectly functional



EXTREME TOP
"Indoor Atrium"

The building is purposely voided and punctured in the middle to create an indoor atrium. It will significantly change and modify the look, ambience, and character of the interior. New opportunities for spatial zoning and layout will be introduced.

Gently sloping ramp combined with terraced flooring / staircases shall loop and connect the whole building. Commercial spaces shall be introduced at the Ground level atrium, i.e. cafe and bookshops. Skewed protruding balconies shall also be featured along the ramp in the Second, Third, and Fourth levels.

The looping ramp shall provide easy association of the spaces to the users.

TOP
"Perimeter Shelving and Storage"

Shelving and storage shall be beautifully introduced along the perimeter of the ramp to add more storage capacity to the library. It will also be a dynamic way of categorizing the sections of the library. Equally, it will serve as a diffuser of daylight and a buffer from unwanted noise.

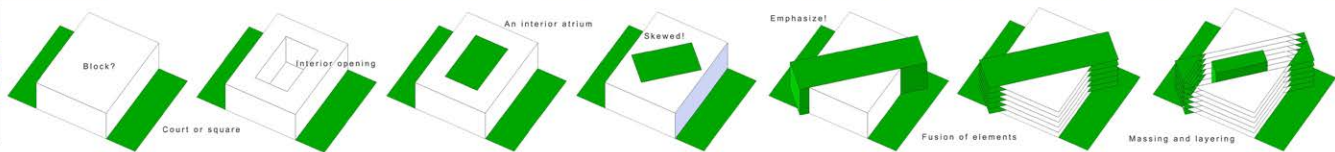
EXTREME RIGHT
"Scale and Proportion"

Ceiling height, corridor width, and spatial volumes are given due consideration in the design. Sensible scaling and proportion of the spaces are ensured for a more comfortable ambience, conducive to studying and discourse.



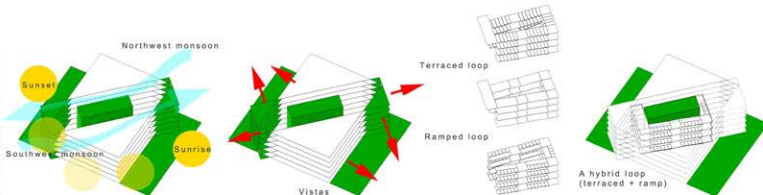
RIGHT
"Form Development"

The intent of the design is to introduce a skewed element which will blend and coexist alongside the formal element.



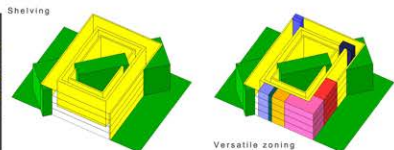
RIGHT
"Site Orientation"

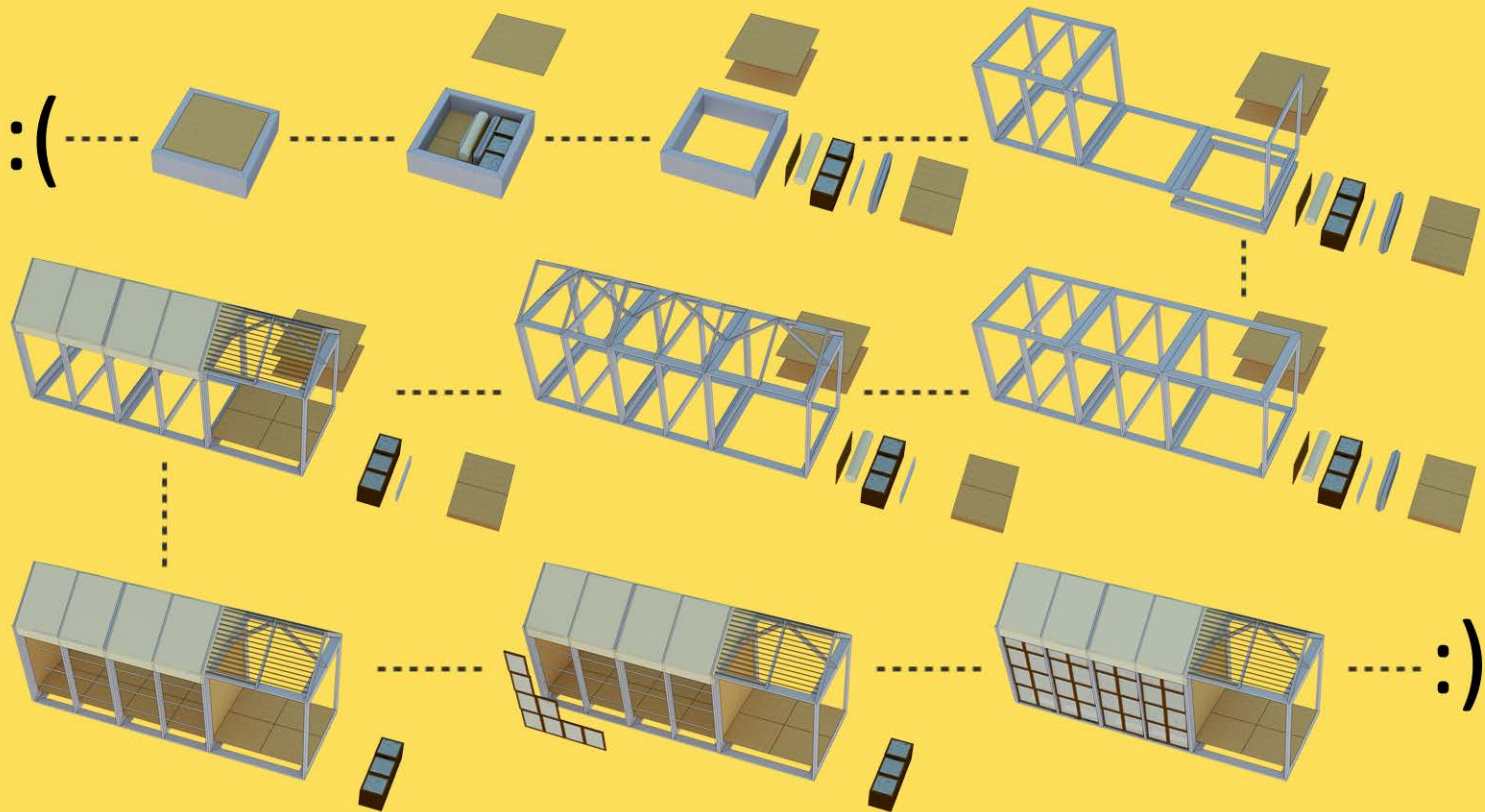
The angle is purposely determined to follow wind and sun path, thus, maximizing both the natural ventilation and daylight.



RIGHT
"Space Zoning"

Book shelves are strategically positioned for maximum book storage and display. Unorthodoxly angled space intelligently provides hierarchy of areas.





MATRIX HOUSE

POST-DISASTER TRANSITIONAL SHELTER | PHILIPPINES

an architectural solution to bridge the gap between short-term relief and reconstruction



WASH FACILITY

POST-DISASTER TRANSITIONAL SHELTER | PHILIPPINES

a design proposal in response to the calamities experienced in the philippines



50 SHADES OF BROWN

MULTIPLICITY | BACLARAN

social and commercial with character. highlighted by brise-soleil with playful texture, color, and shade, to establish identity.



STRETCHED OUT

CAMPY | CAMIGUIN

through-and-through design and program of spaces with permeable walls and roofs. stretched structure that opens out to the horizon.



LAYAG

GEOMETRIC JOURNEY | ROXAS CITY, CAPIZ

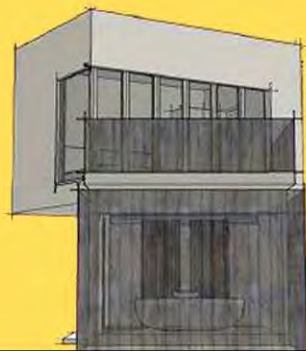
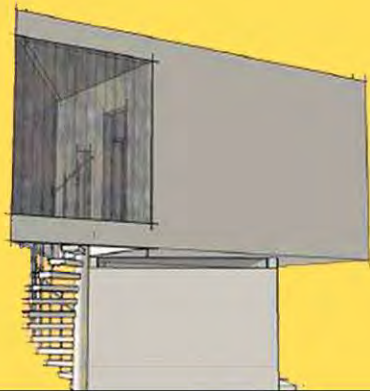
inspired by geometry and vessel assembly that are then adapted to the structure's design and texture.



Assyme-Tree

OPEN ENCLOSED | PUERTO PRINCESA, PALAWAN

a leisure-hotel resort, enveloped by a unique assymetrical steel framework: emulating the trees while connecting the roof deck and the pool deck.



TIPPING POINT

CLOSER TO THE EDGE | MALAPASCUA, CEBU

executive dive resort at the tip of the island. masterplanned development with designed villas for divers. drama and excitement is emulated in the design while being structurally capable of withstanding high speed winds and typhoons.



BREEZE

UNBOXED | FAIRVIEW, QUEZON CITY

breaking cubes and boxes to achieve a unique façade while allowing the structure to breathe



SLANTED

VERTICAL DIAGONALS | FAIRVIEW, QUEZON CITY

exploring the idea of diagonal forms as defined by the roof and breaking the spaces of the house through separate structures



RE-PAIRED

SINGLE TO COUPLE | TAYTAY, RIZAL

exploring the renovation, reuse, and reconfiguration of an old bungalow structure into a duplex residence



IN THE ZONE

ACTIVE - CHILL | CAVITE

spaces for social interaction. spaces for solace. balance between structure and open space



ABOUT FACE!

APOCALYPSE NOW | ANTIPOLLO CITY

designed for the zombie apocalypse while still providing basic essentials of sustainable design.



LEAN ON ME

DUALITY - INDIVIDUALITY | PARANAQUE CITY

using the structure while creating its own unique character. new design. new program. new identity.



BIG BLOCK...

BOXED IN | MUNTINLUPA CITY

designed and programmed as a hotel for members of the family. massive and imposing. oriented based on site.



HOW [2] BE [U]

COURTING THE USER | CAVITE

smooth transition of interior and exterior spaces. central courtyard separates 2 volumes of spaces. spartan design and plans.



FEEL THE HEAT

HUMBLE ABODE | ZAMBALES

modernized country-side living combination and experimentation of elements while achieving functionality and sustainability..



TWO TO TANGO

FOREIGN RETIREMENT | TAGAYTAY HIGHLANDS

simple massing, simple facade, utilitarian planning and design that exists to experience the vistas of the property.



HOUSE OF MANY FACES

ALL THE VIEWS | TAYTAY, RIZAL

unique and unidentical design on all sides of the house. recurring elements with inconsistent application to create a uniform character.



ELEV[EIGHT]ED

BALANCING ACT | MARIKINA CITY

independent structure clear and over the existing house. floating, hanging, balancing.



IRON CURTAIN

FAMILY OVER BUSINESS | DAVAO CITY

a residential structure located at the uppermost storey: over leasable duplex units. undulating skin made of iron to provide privacy.



HOME

THE EAST OFFICE, CRAFTED BY EAST! | MARIKINA CITY

not bounded by home offices or condominium restrictions, this is our first studio where we were able to craft and fulfill our wishes and desires



ONE MORE CHANCE

SHELTERED ASSISTANCE | BONIFACIO GLOBAL CITY

spaces that aid in creating meaningful connections and conversations that reinvent the box of conventional thinking on drug use and recovery



FORMAL BREAKS

RECEIVING PEOPLE | PHILIPPINE CONGRESS

creating character in spaces provided for officials of the philippine congress through the use of accent elements



VIS-A-VIS

VISUAL CONNECTIONS | MAKATI CITY

a start-up office in the heart of the city that focuses on the open connections of their company to their clients



REFINED GEOMETRY

ONE SHANGRI-LA PLACE | SHANGRI-LA RESIDENCES

simple lines and geometric patterns were utilized by our team in the design for this 1-bedroom unit



PLASTIC FANTASTIC

CONDOLIVING MAGAZINE | DESIGNER CHALLENGE

harmony in disparity, a paradoxical composition



SUBTLE APPLE

AXIS ONE SHOW UNIT | AXIS RESIDENCES

designing a home for a nature-loving, young bachelorette living in the middle of Metro Manila

EMERGING ARCHITECTS STUDIO
Design Portfolio 2018